

LOCATION, LOCATION, LOCATION!

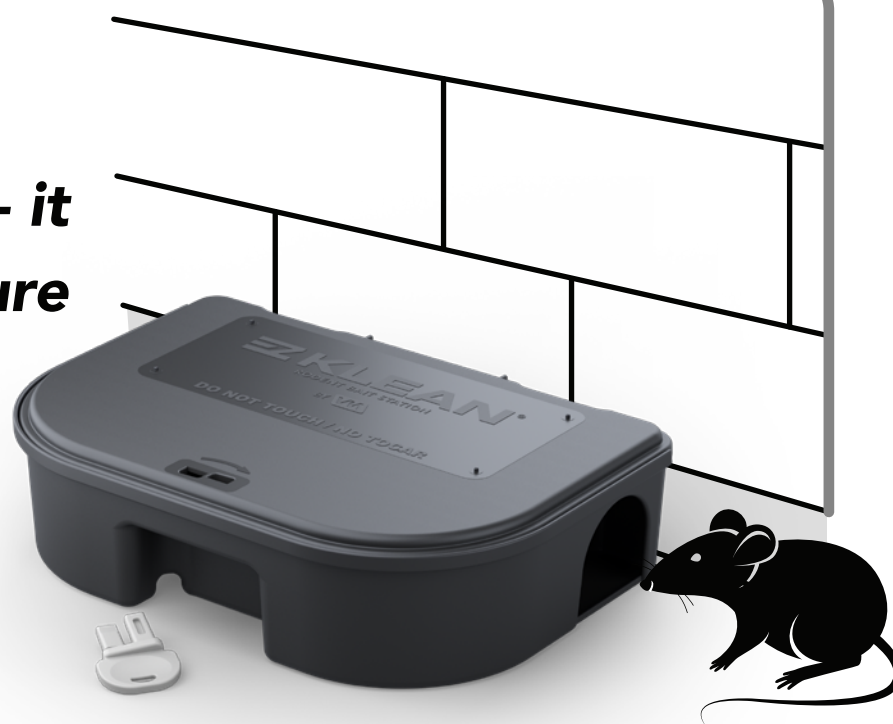


The best bait station in the world with the best bait still won't be visited by rodents if you don't put it in the right place.

TOUCH

Rodents like running against edges - it makes them feel more safe and secure than being out in the open.

If bait stations are away from the wall/ground junction, the rodents will run behind them and not into them.

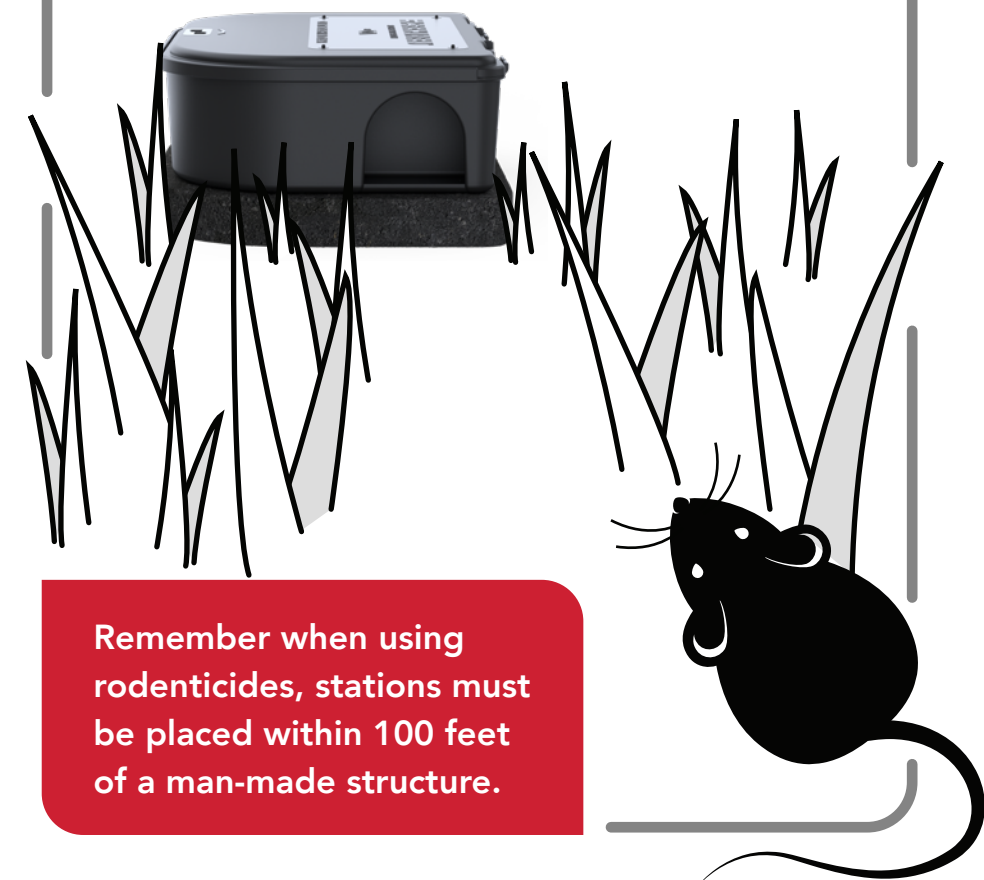


Place bait stations directly on the wall edge so rodents are directed inside to where the bait is.

PATHWAYS

It's not always as clear as a 90° angle.

Rodents will also create pathways through vegetation and setting stations directly in these areas can increase the chance of a rodent visiting a station.



Remember when using rodenticides, stations must be placed within 100 feet of a man-made structure.

THINK IN 3D

Rodents aren't always on the ground.

Roof rats in particular will be in elevated areas. Mice can be in attics or drop ceilings. If stations are only put on the ground level, rodents may never access them.



Make sure to look up during inspections and put bait stations up high when needed.

FOOD

If rodents have an available and abundant food source, there is no reason to visit bait stations.

Try to eliminate as many food sources as possible to make the bait stations more appealing.



Reducing habitat is helpful too: removing overgrown nesting areas makes stations more appealing.



SHADOWS

Being mostly nocturnal, rodents are more comfortable in dark areas.

The more stations can be put in shaded and shadowy areas, the more likely rodents are to visit them.

It's not just the daytime shadows, think about lights and night and the shadows they cast.

