

TIPS / **ON RESIDENTIAL EXCLUSION**

VMPRODUCTS®



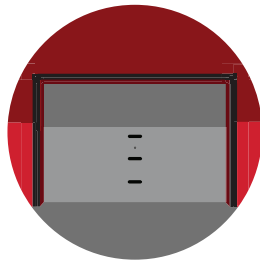
TABLE OF CONTENTS

INTRODUCTION
3

TIP 1 /
DOORS
5



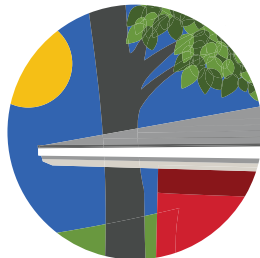
TIP 2 /
GARAGES
7



TIP 3 /
VENTS
10



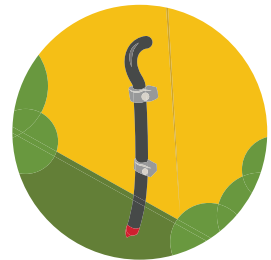
TIP 4 /
ROOFS
12



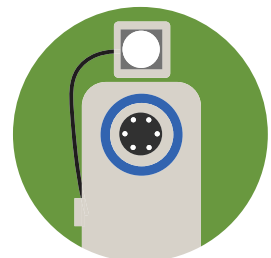
TIP 5 /
HVAC +
CONDUITS
15



TIP 6 /
ELECTRICAL +
CABLE LINES
18



TIP 7 /
ONGOING
MONITORING
20



CONCLUSION
22

RESIDENTIAL
EXCLUSION
24

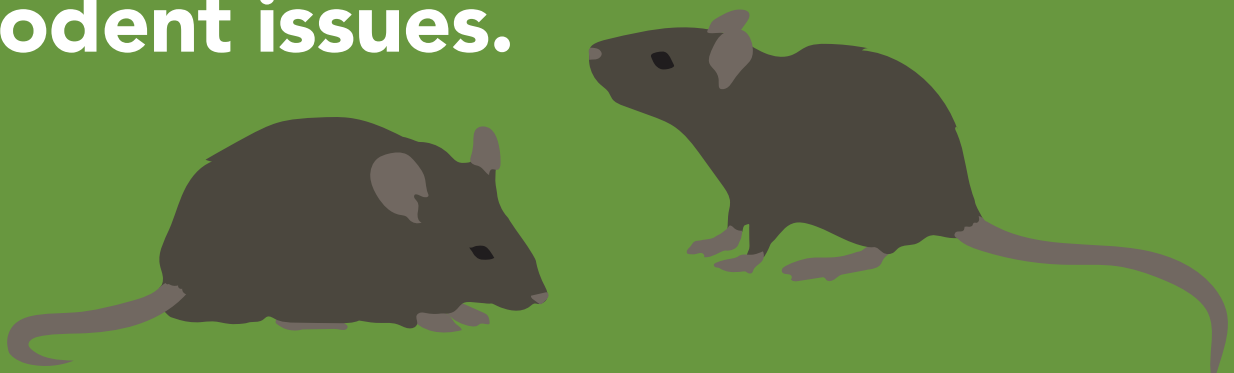
MBS^{1®}
BAIT STATION
25

CONTACTS
26

Rodent control isn't easy: rodents are relatively small, they like to hide, and they can feed on plenty of items that people provide for them.

House mice, Norway rats, and Roof rats have been around for thousands of years and have adapted well to living off what people provide for them.

Integrated approaches are best since no one tool can ever adequately manage rodent issues.



These approaches are broken down into the following categories:

- **Inspection:** for the rodents, their food source, the harborages, damage they leave, and more.
- **Sanitation:** removing not just their food source but their water and harborage as well.
- **Exclusion:** sealing up structures to keep them out.
- **Trapping:** for removal and overall population reduction as well as monitoring.
- **Baiting:** to reduce populations and to monitor.

This resource will provide tips specifically for exclusion, but don't forget the other steps. With the right knowledge, strategies, and tools, PMPs can enjoy great success in eradicating these crafty rodent populations and earn more business.

This resource can help you save time and money by finding and treating the issues faster. Faster resolution means happier customers and more referrals.



TIP 1 / DOORS

Mice and rats don't need much of an opening to enter: any hole the size of a dime enables mice to enter and any opening the size of a quarter for a full-grown rat to gain entry. Rodents can enter from ground level. Door seals that are broken at the bottom provide a perfect entry point.

To check these, you need to get low. It can be hard to see when standing because the angle isn't right to see the entire bottom of the door. Kneel on the inside and look towards the outside: seeing daylight means exclusion is needed. Check every door that leads from the inside to the outside. Ensure when new door seals are installed, they go all the way to the corners. If rodents want in, they will find those open corners.



DOORS CONT

In some areas, it may be beneficial to install **EZ Secured Bait Stations** with either bait or traps to reduce the population and monitor where and how often rodents are gaining entry. If using bait, ensure the station is locked and secured to prevent non-target entry. To seal the doors, consider using **XCluder Door Sweeps** that rodents absolutely can not chew through as opposed to brush seals or inexpensive plastic weatherstrips. XCluder is long lasting door seals and comes in a variety of sizes to fit all doors.

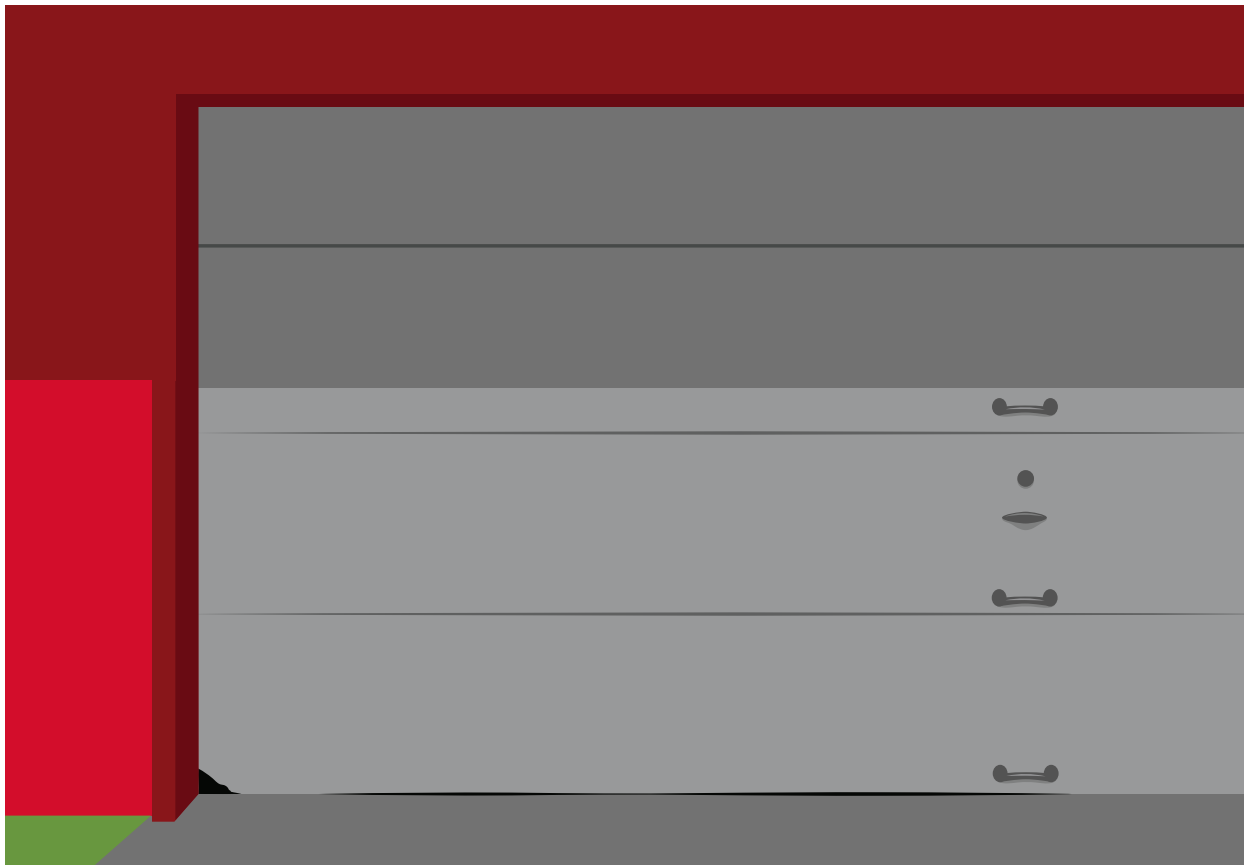


EZ SECURED®
RODENT BAIT STATION

TIP 2 / GARAGES

These spaces tend to be a transition zone between the outside and the inside of the house. There are several things to consider when it comes to garages.

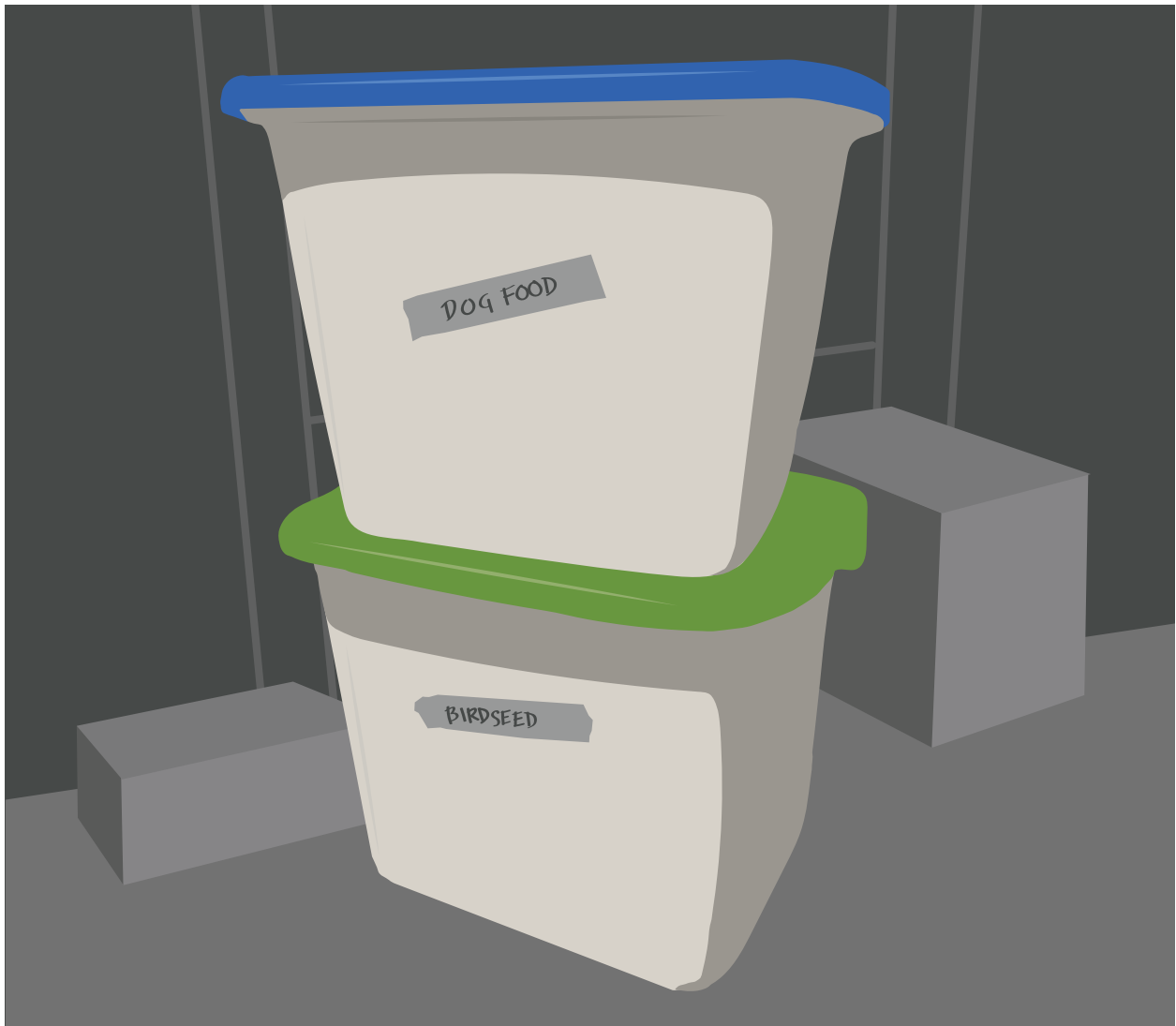
Seal the door—sounds self-explanatory, but how many times do you see garage doors that have the corners broken out or worn out bottom seals? Older doors may not seal on the sides, leaving yet another entry point for rodents to get in.



Check the inner door—the door that leads inside the home. Especially if the roll-up garage door is a major fix, just properly sealing the door that leads from the garage to the inside of the house can prevent rodents from gaining entry and expanding their populations.

GARAGES CONT

Contain foods. Many people have expanded their food storage to garages as they have stocked up on dry foods. Ensure those are kept in sealed bins that are strong enough to keep rodents out. Don't forget the pet food and any birdseed. These items tend to be in large bags that people will open, then set in garages and take as they need.

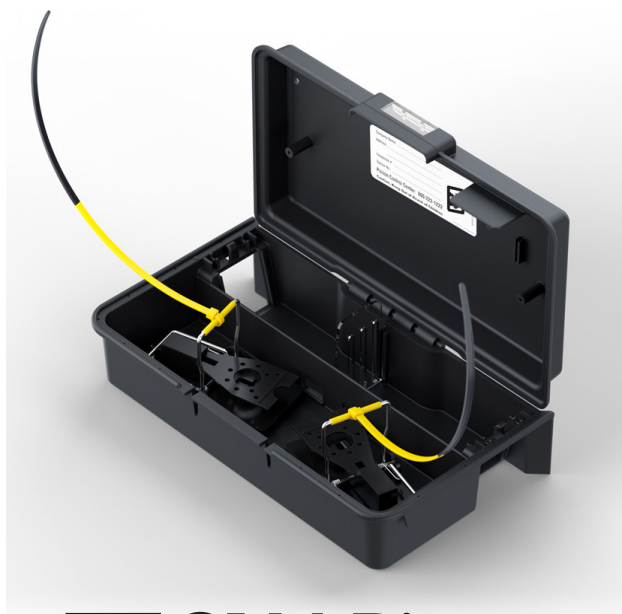


Inspect pet doors. If the customer has installed a pet door to allow their pet to come and go, it could also allow easy access for rodents. Ensure it is sealed around the edges and is kept locked shut when not in use.

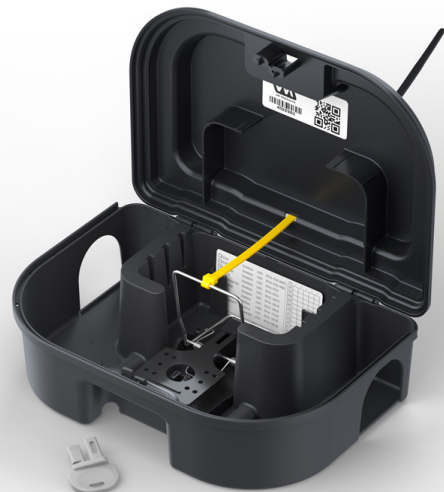
GARAGES CONT

Have the customer seal the garage and house doors. Verify the customer understands the need to keep the doors closed and sealed and any food contained. Around garage doors and areas where rodents have been active, the **EZ Snap Rat** and **EZ Snap Mouse** are a good option. These rodent stations are also a time saver since the indicator ties tell when a trap has been tripped (instead of opening each trap, each time). They can also be used as monitoring and trapping devices around doors that need exclusion work that can't be done right away.

Consider using Samurai Armored Door Sweeps to seal the bottom of those doors. They have a patented stainless-steel frame to keep rodents out. Using a reinforced door sweep like this means long-lasting protection against rodents chewing in.



EZ SNAP[®]
MOUSE

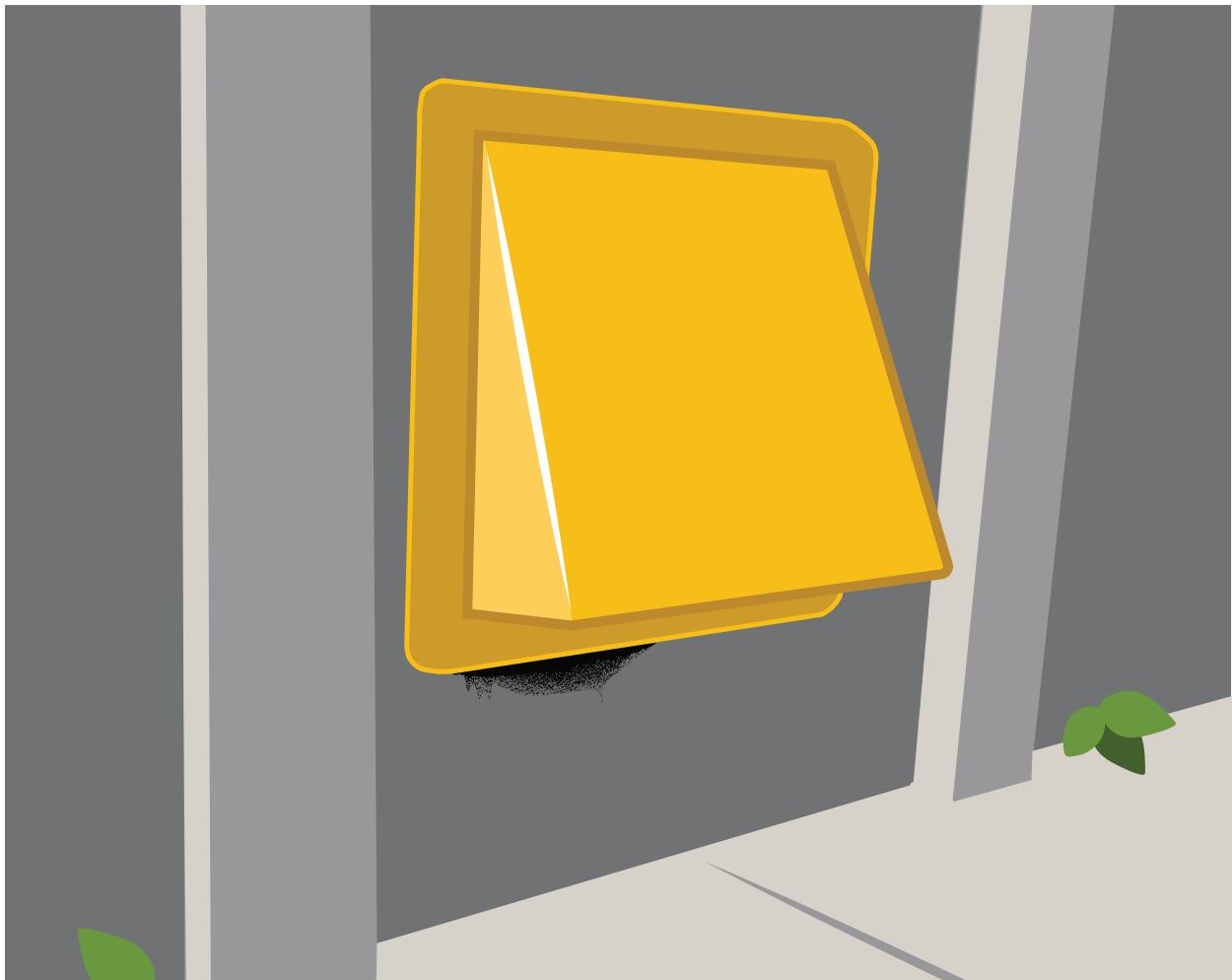


EZ SNAP[®]
RAT

TIP 3 / VENTS

Rodents don't just appear inside a site; they had to get into that site somehow. Doors are the first and likely most obvious points, but there are many openings that can connect the outside of a house to the inside. Vents, such as dryer vents, provide a perfect access point for rodents to get in. There are a number of vent covers that can be purchased and installed to keep out rodents and other pests.

Nearly any half-inch opening on the structure that leads from the inside to the outside, can potentially let in a rodent. Dryer vents on homes are often within jumping distance of rodents and sealing off these areas leads to long term success.



VENTS CONT

To ensure rodents haven't or aren't getting in, the EZ Force Rodent Station is a good choice for laundry rooms and other tight spaces you may be concerned about. It's low lying and can accommodate a glue board to monitor for insects as well as rodents.



EZ FORCE[®]

TIP 4 / ROOFS

Roofs are especially challenging when it comes to exclusion. From the outside, even with ladders and safety equipment, it's difficult to see the whole area in detail. From the inside, it can be tough to access and once you are up in that space, it is dark, confined, and usually not completely accessible.



ROOFS CONT

When performing attic and roof exclusion jobs, carefully consider the surroundings and be safe. Consider the landscaping outside: if trees, vines, or other vegetation are providing a pathway, exclusion may not be completely effective until that is addressed. Roof rats and mice may chew their way back in or find new openings to enter. If rodents haven't been eliminated before exclusion is done and they can't enter and exit the same way, they will come down through the house and into the living spaces.



ROOFS CONT

The **Interceptor line of connected traps** is the next generation of rodent control and can alert you immediately by text or email when a trap is triggered. It is completely scalable from mouse traps to rat traps, inside or outside. Having instant electronic notification of activity means you can respond quickly and accurately, solving the customer's issue fast. This is also a great option for long term monitoring after an exclusion job.

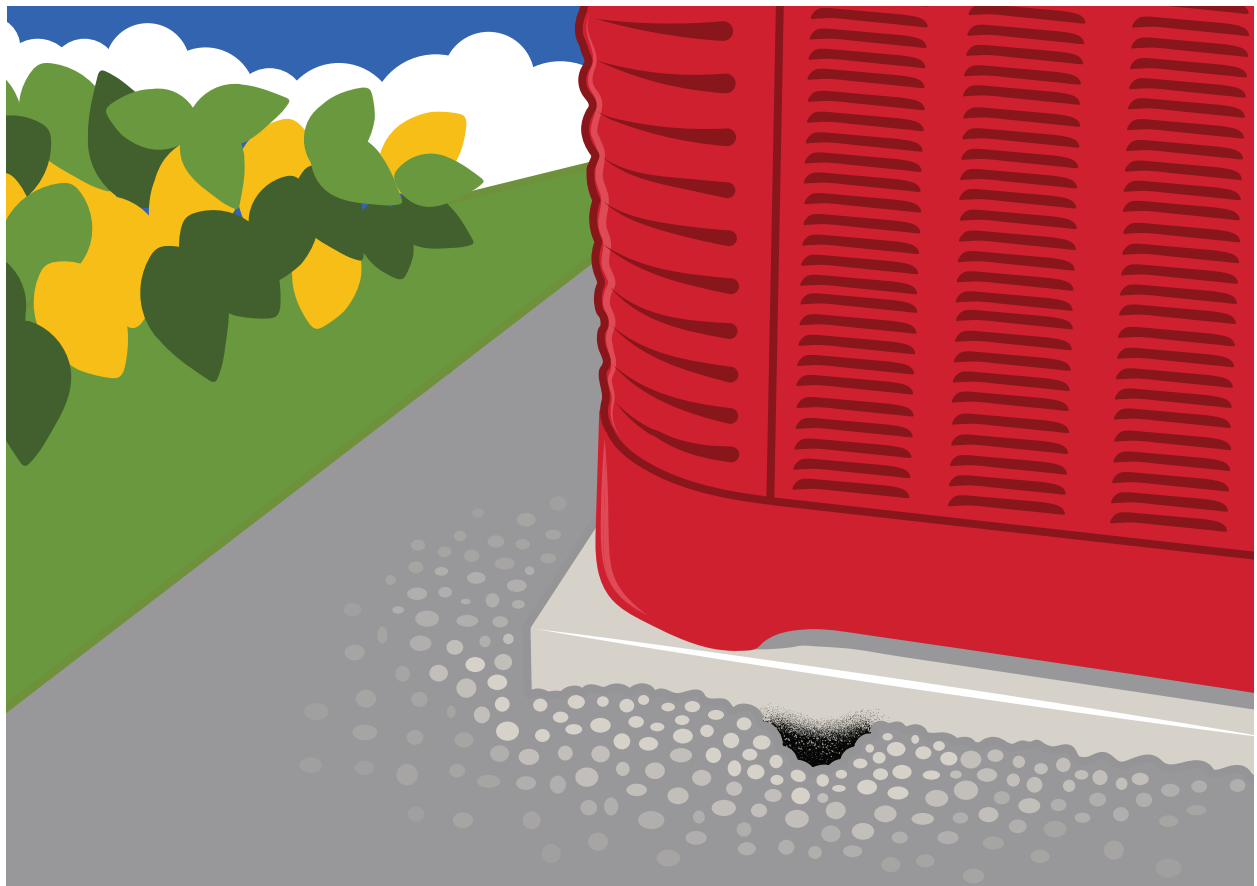


TIP 5 / HVAC + CONDUITS

HVAC units are often overlooked when it comes to pest control.

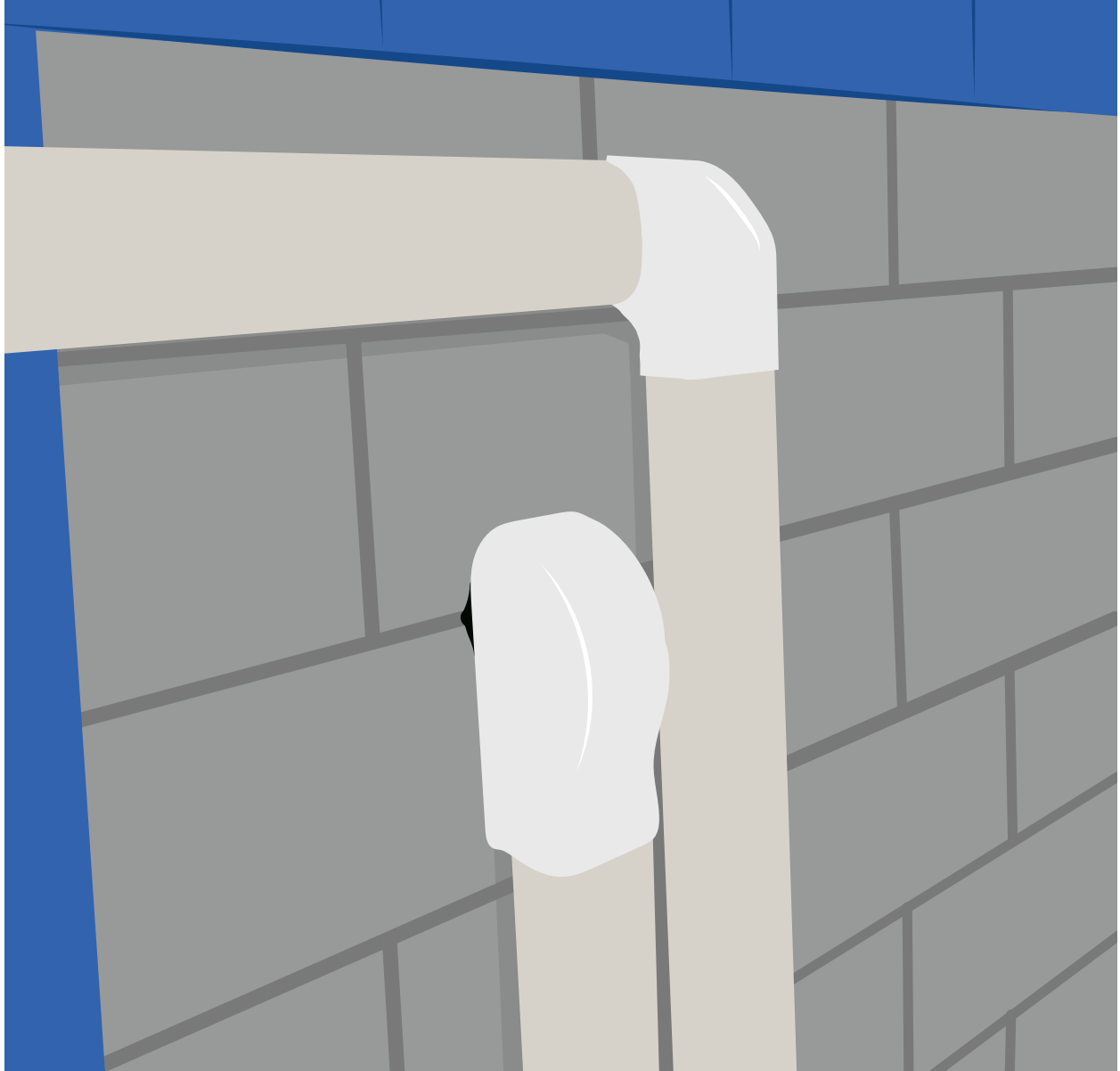
These units are usually very close to the house, provide year-round shelter, warmth in the winter, and a water source. Rodents can gnaw through and around the lines and conduits, gaining entry into the house. There are many potential opportunities for exclusion.

Protect around the units themselves by using appropriate screening material around them. Also, many of these units sit on a concrete pad; it's important to ensure rodents can't burrow underneath it.



HVAC + CONDUITS CONT

Outside the house where the units connect to the house and conduits penetrate the structure, ensure there are no openings. Use rodent proof materials (not foam) to seal up these areas.



Another potential opportunity for exclusion is inside the house.

Although not ideal since rodents could still get in and travel inside the walls, it can be an additional exclusion method to augment the outside sealing.

HVAC + CONDUITS CONT

On the outside, use a station like the **EZ Klean** to remove and monitor for rodent activity. This station can accommodate traps or bait. It's versatile enough to use on the ground for mice and Norway rats. If using bait, ensure the station is locked and secured. When sealing small openings, do not use foam. Rodents will easily gnaw through the foam and reestablish the pathway they were using. Use a product like **RodentStop** so rodents can't chew through and get back in.



TIP 6 / ELECTRICAL + CABLE LINES

As with the HVAC units connecting to the house, there are other lines like electrical, cable, satellite, and more that provide potential access points, especially to roof rats and mice. It's important to look up when doing inspections for exclusion work. Follow lines from their starting points to where they enter the home. If at all possible, seal these from the outside. If needed, consult an electrician or professional to ensure lines aren't damaged.



ELECTRICAL + CABLE LINES CONT

To monitor around these units, consider using the **EZ Snap Seeker**.

On the ground level, these can be placed around lines and boxes that are entering the house. Depending on the setup, these might be able to be zip tied to thicker cables or on top of boxes to capture those rodents using the lines as runways. The indicator ties are an excellent time-saver to see from a distance which traps have been tripped, and which ones haven't.



EZSNAP
SEEKER

TIP 7 / ONGOING MONITORING

What does monitoring have to do with exclusion? Everything.

Before performing any exclusion work, you want to ensure all rodents are out of the structure. Using traps and stations is a great idea to clear out the rodents and make sure there aren't any left. Otherwise, you will cut off their escape route and they will find another route: through the home.



During the job and just after, you have cut off their access points from the outside, so rodents will be running. Using traps and bait stations can reduce the overall population and prevent them from trying to chew their way back in.

After the job, ongoing monitoring provides a guarantee that the job was done right and customer peace-of-mind.

ONGOING MONITORING

CONT

PestOptix is an excellent tool for before and after exclusion jobs, especially in hard-to-reach areas like attics, basements, and crawl spaces. The cameras can give real-time information on where rats and mice are running, harboring, and entering/exiting. After the exclusion jobs, they can be a monitoring tool to ensure no areas were missed and there are no rodents left. Leaving these for at least 90 days guarantees to the customer the job was successful. After 90 days, these can be an add-on service for continued monitoring.



Rodent issues are rarely straightforward and require a combined effort of sanitation, exclusion, trapping, and baiting. It takes collaboration between you and the customer to quickly and effectively identify issues and respond. Rodent control doesn't stop when the exclusion is complete. Rodents are crafty and will try to find a way in. Continued monitoring to find new exclusion opportunities is beneficial.

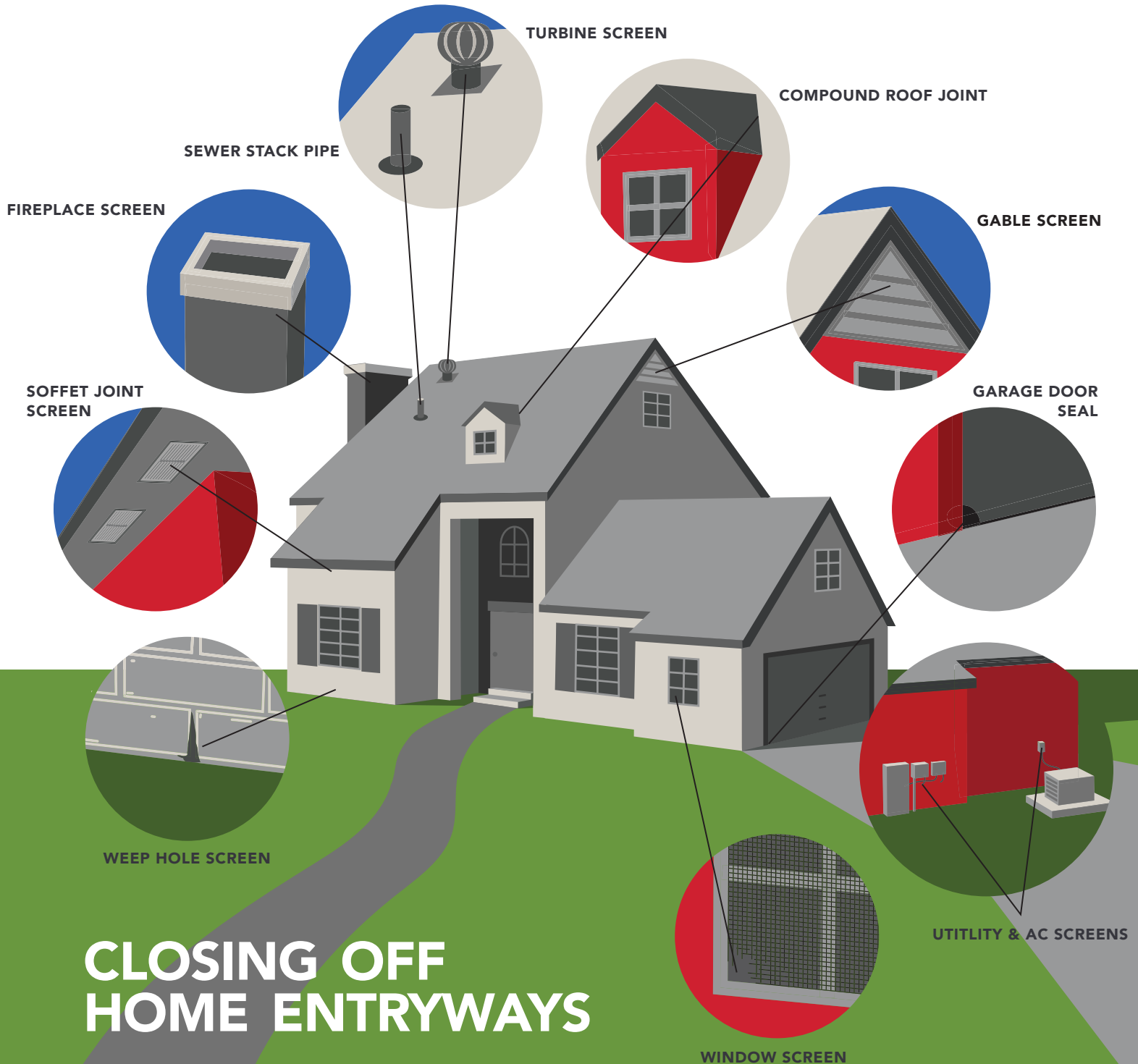


On the next page, you'll find a detailed diagram of home entryways that you can use while surveying a home for rodents.

If you have questions on controlling rodents, want more information on products, or need any other information, reach out to us at www.vmproducts.com.



RESIDENTIAL EXCLUSION



READY FOR ACTION IN SMALL SPACES

The **MBS^{1®}** is the ideal multifunctional bait station for use in tight spaces. Compact in size, its large internal area includes a metal rod to skewer soft and block baits. Optional baiting tray for insects makes it the versatile and dependable choice for LEED-certified buildings. The locking lid protects the bait from weather and other elements. The station has a raised lip around the front of the station, which deters unwanted entry. Our smooth design and drainage holes prevent mold growth or insect harborage.



CONTACTS

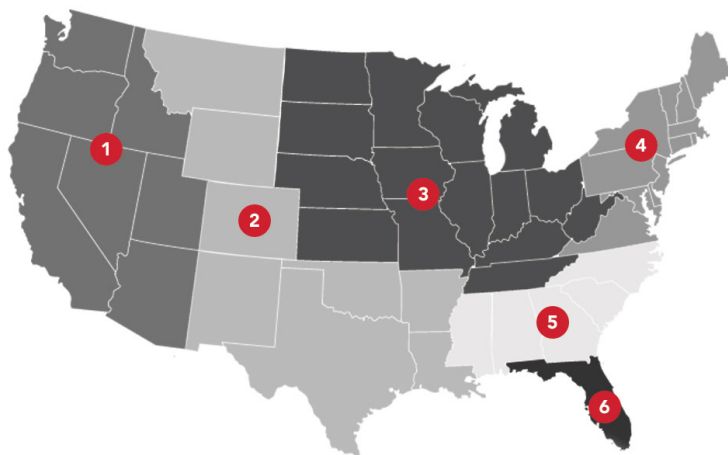


CHIEF OPERATING OFFICER

DAWNERY VARGO

dvargo@vmproducts.com

c: 214.460.2733 o: 817.479.2740 x230



1

WESTERN

ART GUZMAN

Modern Methods
Sales & Marketing

guzzer60@gmail.com

702.577.6382



2

SOUTH CENTRAL

JOHN BROWNLEE

Innovative Pest
Management Solutions

jbro434@gmail.com

615.838.3149



3

CENTRAL U.S. & CANADA

RICH WILLIAMS

R-Pro Partners & Solutions LLC

rich@rpropartners.com

317.490.5080



4

NORTHEAST

PAT RYAN

Patriot Digital Marketing (PDM)

naturalpestcontrol@cox.net

860.808.7663



5

SOUTHEAST

STEVE SULLIVAN

Sullivan Sales & Marketing LLC

ssm2steve@outlook.com

404.615.6310



6

FLORIDA & CARIBBEAN

JIM SHUFORD

Biologic Sales & Marketing

biologics@aol.com

941.350.6223



4

DILLON RYAN

Patriot Digital Marketing (PDM)

pmgsales@cox.net

860.808.7735

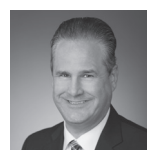


PRESIDENT

ETHAN VICKERY

evickery@vmproducts.com

817.528.2939



DIRECTOR OF TECHNOLOGY

MIKE HOVIS

Contact for Digital Pest Solutions

mhovis@vmproducts.com

817.269.0439



P.O. BOX 211385
BEDFORD, TEXAS 76095
888-758-9513
VM PRODUCTS.COM

VM Products, Inc. expressly disclaims any representation, guarantee, or warranty, express or implied, as to the completeness, accuracy, merchantability, or fitness for a particular purpose of any of the information, and is provided on an as-is basis. Any use of or reliance on this information is at the user's sole risk and without liability to VM Products, Inc. The user of this information releases VM Products, Inc. from all claims and causes of action (including negligence claims). In no event will VM Products, Inc. be responsible for damages of any nature whatsoever resulting from the use of, or reliance upon, the information or any product referred to herein.

Customers intending to use a pesticide, bait stations, and all pest control products must read and follow the label(s) accompanying the applicable product(s) and comply with all applicable federal, state, and local laws and regulations relating to product usage.

